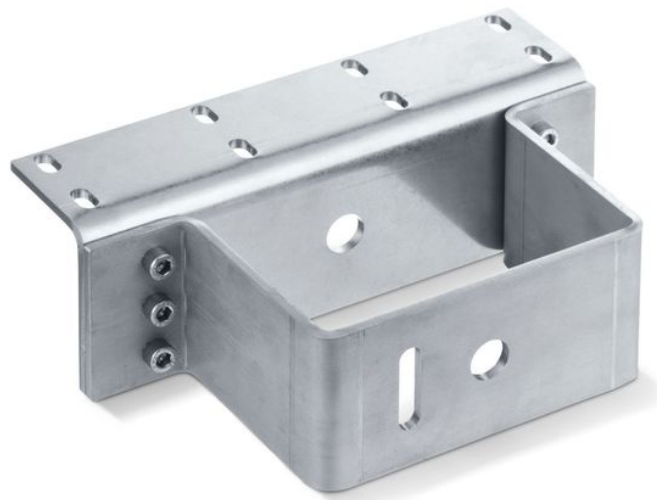


Product data sheet

Bracket E 3000 NSK S

*



For roof window installation of the E 1500 S and E 3000 spindle drives

AREAS OF APPLICATION

→ Secondary closing edge installation on roof windows type Schüco AWS57 RO

Bracket E 3000 NSK S *



PRODUCT FEATURES

→ Easy attachment

TECHNICAL DATA

Productname Bracket E 3000 NSK S *

VARIANTS / ORDER INFO

Designation	Description	Ident- No.	Colour
Bracket E 3000 NSK S *	suitable for installation on the secondary closing edge of roof windows (Schüco AWS57 RO). Supplied by GEZE without conical sleeve ID no. 121274	136183	silver- coloured

* The products designated above may vary in form, type, characteristics, function, or availability depending on the country. Please get in touch with your GEZE contact person if you have any questions.