

# Product data sheet

## Perlan 140 glass with 45 mm glass clamping plate wall installation



Sliding door fitting system for glass doors with 140 kg leaf weight and 45 mm glass clamping plate and wall installation

### AREAS OF APPLICATION

- Frequently used interior sliding doors
- Living, office, and conference areas as well as hotels
- Installation of fittings in all visible areas
- Single and multiple-leaf sliding doors
- Installation in front of the wall

# Perlan 140 glass with 45 mm glass clamping plate wall installation

## PRODUCT FEATURES

- Sliding door fitting for leaf weights of up to 140 kg
- For glass leaves with 45 mm glass clamping plate
- With damping on one or both sides for doors with up to 80 kg leaf weight, so that the door is quietly slowed down and moved into the end position
- Adjustable wall brackets balance out uneven masonry and allow for a freely selectable clearance from the wall
- Precision ball bearings in the roller carriages offer very smooth sliding action
- Tested for durability in accordance with DIN EN 1527 over 100,000 test cycles

## TECHNICAL DATA

Productname Perlan 140 glass with 45 mm glass clamping plate wall installation

## PART

### PERLAN 140 SET FOR GLASS LEAVES

Sliding door fitting for wall installation and glass leaf



Designation	Description	Ident-No.	Colour	Leaf width (min.)	Leaf width (max.)
Perlan 140 set for glass leaves	For wall attachment with concealed wall bracket, glass clamping plate individually covered and Perlan SoftStop, up to 80 kg leaf weight. For 2050 mm track length Perlan SoftStop one-sided, for 2450 mm track length Perlan SoftStop both sides.	134860	Stainless steel optic	575 mm	1000 mm
Perlan 140 set for glass leaves	For wall attachment with concealed wall bracket, glass clamping plate individually covered and Perlan SoftStop, up to 80 kg leaf weight. For 2050 mm track length Perlan SoftStop one-sided, for 2450 mm track length Perlan SoftStop both sides.	134855	EV1	900 mm	1240 mm
Perlan 140 set for glass leaves	For wall attachment with concealed wall bracket, glass clamping plate individually covered and Perlan SoftStop, up to 80 kg leaf weight. For 2050 mm track length Perlan SoftStop one-sided, for 2450 mm track length Perlan SoftStop both sides.	134861	Stainless steel optic	900 mm	1240 mm
Perlan 140 set for glass leaves	For wall attachment with concealed wall bracket, glass clamping plate individually covered and Perlan SoftStop, up to 80 kg leaf weight. For 2050 mm track length Perlan SoftStop one-sided, for 2450 mm track length Perlan SoftStop both sides.	134854	EV1	575 mm	1000 mm

# Perlan 140 glass with 45 mm glass clamping plate wall installation



## ACCESSORIES

### END STOP WITH ADJUSTABLE HOLD-OPEN SPRING

Adjustable end stop for Perlan sliding door fitting



Designation	Ident-No.
End stop with adjustable hold-open spring	069274

### HOLD-OPEN SPRING

Hold-open spring for Perlan 140 end stop



Designation	Ident-No.
Hold-open spring	064242

### DOOR STOP

End stop for sliding leaves



Designation	Ident-No.
Door stop	000339
Door stop	000342

# Perlan 140 glass with 45 mm glass clamping plate wall installation



## LSG GLASS / METAL GLUE \*

Glass metal glueing kit for connecting aluminium brackets with glass panes



Designation	Description	Ident-No.
LSG glass / metal glue 50 g *	for up to 30 sliding panels	133039

## CLAMPING INSERT, GLASS CLAMPING PLATE 45 MM \*

Clamping shim for glass thicknesses of 12.76 mm (1/2 inch)



Designation	Description	Ident-No.
Clamping insert, glass clamping plate 45 mm *	for 2 glass clamping plates, for use with 12.7 mm (1/2 inch) toughened safety glass	133022

## PERLAN DUOSYNC SET FOR GLASS LEAVES

Duosync - manual drive for glass leaves



Designation	Description	Ident-No.	Glass thickness	Type of installation
Perlan Duosync set for glass leaves	for synchronisation of 2-leaf doors up to 140 kg per leaf, consisting of: 2 x deflection pulleys, 2 x driver glass clamping plate 45 mm, 12.5 m tooth belt, installation materials	139207	8 - 12.76 mm	Wall, Ceiling

# Perlan 140 glass with 45 mm glass clamping plate wall installation



## PERLAN SOFTSTOP SET, MEDIUM VERSION, DAMPED ON ONE SIDE, UP TO 80 KG

Perlan SoftStop damping on one side for leaf weights up to 80 kg and leaf widths of 900 up to 1290 mm



Designation	Description	Ident-No.	Leaf width (min.)	Leaf width (max.)
Perlan SoftStop set, medium, one side	The set includes: 2 x roller carriage with damping unit on one side, 2 x end stop, 1 x trigger with fixing screw, 2 x standard suspension plate	128877	900 mm	1290 mm

## PERLAN SOFTSTOP SET, LONG VERSION, DAMPED ON BOTH SIDES, UP TO 80 KG

Perlan SoftStop damping on both sides for leaf weights up to 80 kg



Designation	Description	Ident-No.	Leaf width (min.)	Leaf width (max.)
Perlan SoftStop set, long, both sides	The set includes: 2 x roller carriage with damping unit on both sides, 2 x end stop, 2 x trigger with fixing screws, 2 x standard suspension plate	128891	1290 mm	1700 mm

## SET PERLAN SOFTSTOPDUO, DAMPED ON BOTH SIDES

Perlan SoftStopDuo with damping on both sides up to 80 kg leaf weight



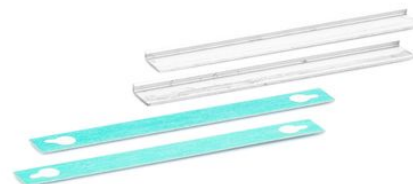
Designation	Description	Ident-No.	Leaf width (min.)	Leaf width (max.)
Perlan SoftStopDuo set, damped on both sides, up to 80 kg	The set includes: 2 x roller carriage with damping unit on both sides, 2 x end stop, 2 x trigger with fixing screws, 2 x standard suspension plate	150071	750 mm	1290 mm

# Perlan 140 glass with 45 mm glass clamping plate wall installation



## LSG GLUEING BRACKET SET \*

Aluminium glueing bracket for LSG and glass clamping plate 45



Designation	Description	Ident-No.
LSG glueing bracket set *	for use with LSG in connection with glass clamping plate 45 mm, for 2 clamping plates, without adhesive	133099

## DOOR PULL HANDLE, CONFIGURED \*

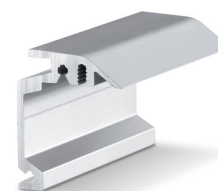
Push bar – round design for installation on glass leaves



Designation	Ident-No.	Colour
Door pull handle, configured *	127616	Stainless steel

## WALL BRACKET CONCEALED PERLAN

Wall bracket for concealed wall installation of tracks



Designation	Description	Ident-No.	Colour
Wall bracket concealed Perlan	bespoke, for use with up to 37 mm leaf thickness	130468	Stainless steel optic
Wall bracket concealed Perlan	bespoke, for use with up to 37 mm leaf thickness	130462	EV1

# Perlan 140 glass with 45 mm glass clamping plate wall installation

## PERLAN SOFTSTOP SET, SHORT VERSION, DAMPED ON ONE SIDE, UP TO 80 KG

Perlan SoftStop damping on one side for leaf weights up to 80 kg and leaf widths of 575 to 900 mm



Designation	Description	Ident-No.	Leaf width (min.)	Leaf width (max.)
Perlan SoftStop set, short, one side	The set includes: 2 x roller carriage with damping unit on one side, 2 x end stop, 1 x trigger with fixing screw, 2 x standard suspension plate	128876	575 mm	900 mm

## FLOOR GUIDE SET GLASS GUIDE

Floor guide for glass sliding leaves for glass thickness 8, 10 and 12 mm



Designation	Description	Ident-No.	Colour	Glass thickness
Floor guide for glass leaf (stainless steel)	For 8, 10, 12 mm glass	134990	Stainless steel	8 - 12 mm

## END CAP SET CLIP-ON COVER 100 \*

End cap for clip-on cover 100, slim version



Designation	Description	Ident-No.	Colour
End cap set clip-on cover 100 *	2 pieces, narrow version, for use without spacer bracket	137869	according to RAL
End cap set clip-on cover 100 *	2 pieces, narrow version, for use without spacer bracket	137867	Stainless steel optic
End cap set clip-on cover 100 *	2 pieces, narrow version, for use without spacer bracket	137865	EV1

# Perlan 140 glass with 45 mm glass clamping plate wall installation



## COMPLETE CLIP-ON COVER SET 100

Clip-on cover for covering Perlan door fitting systems



Designation	Description	Ident-No.	Type of installation
Complete clip-on cover set 100	for wall and ceiling mounting, continuous cover, bespoke configuration	138098	Wall, Ceiling

\* The products designated above may vary in form, type, characteristics, function, or availability depending on the country. Please get in touch with your GEZE contact person if you have any questions.