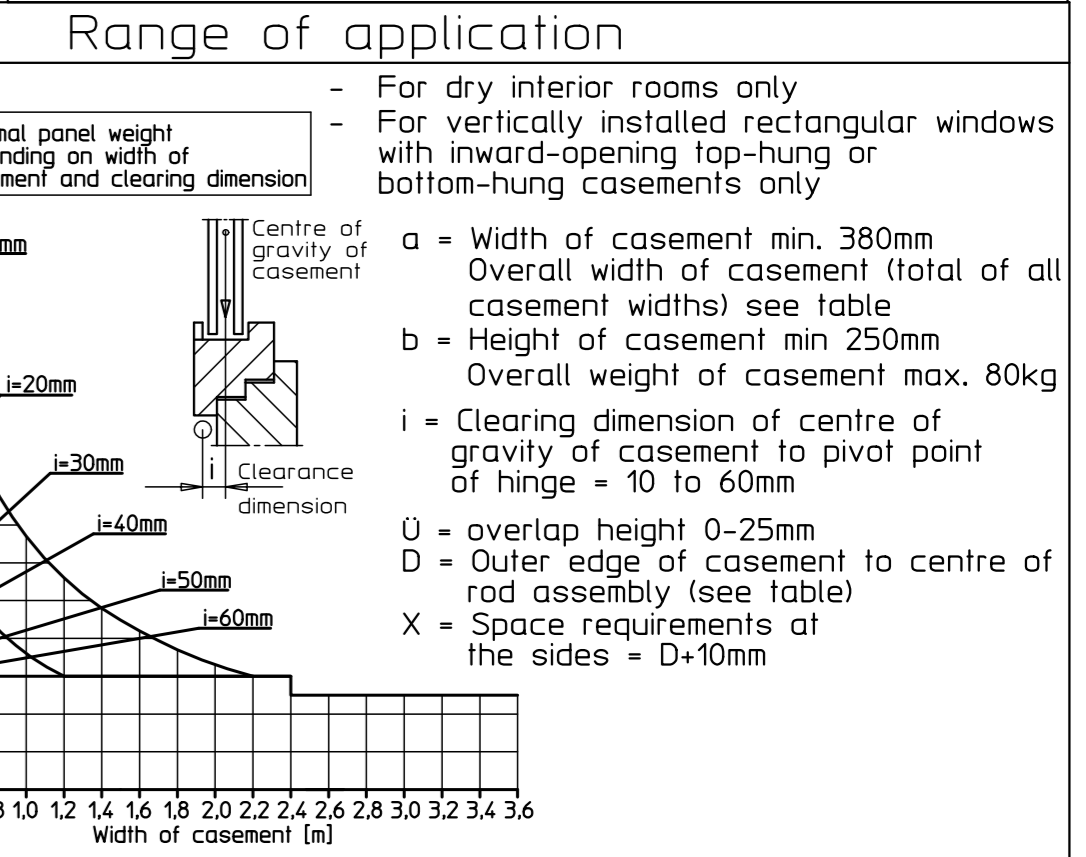


Important information:

- Mounting drawing, assembly instructions, requirements for maintenance and operation must be followed.
- The specified range of applications must be maintained.
- The mounting dimensions must be observed.
- The required fixtures must be used.
- To avoid injury, protective covers must be screwed on projecting threads of the fastening screws.
- Fittings have been drawn in the closed position, however, assembly must occur in open position.
- All attachment screws in open position must be tightened with an Allen key 3mm with 5Nm.
- After assembly and before operation check function and make sure all clamping screws are tightened.
- Linkage and sliding points must be lubricated with an acid-free grease according to DIN 51825.
- The free accessibility of the fittings for lubricating and maintenance must be guaranteed according to DIN 18257.
- If rods or cover profiles of other manufacturers are used, GEZE will neither assume any liability for material quality and sufficient corrosion protection in accordance with the RAL quality assurance nor for possibly occurring damages and consequential losses.
- As of a free rod length of 600mm, rod guides must be used.
- For bottom-hung windows, using a suitable catch guard is mandatory (see GEZE catch guard and cleaning safety).



Technical data

- Opening width approx. 170mm, Stroke of fitting 54mm

Order requirements* for	Fittings (see list of parts)		
OL90N for window, dimension F=26/32	A	C	D+E
OL90N for timber-framed window, dimension F=45	B+B1	C	D+E

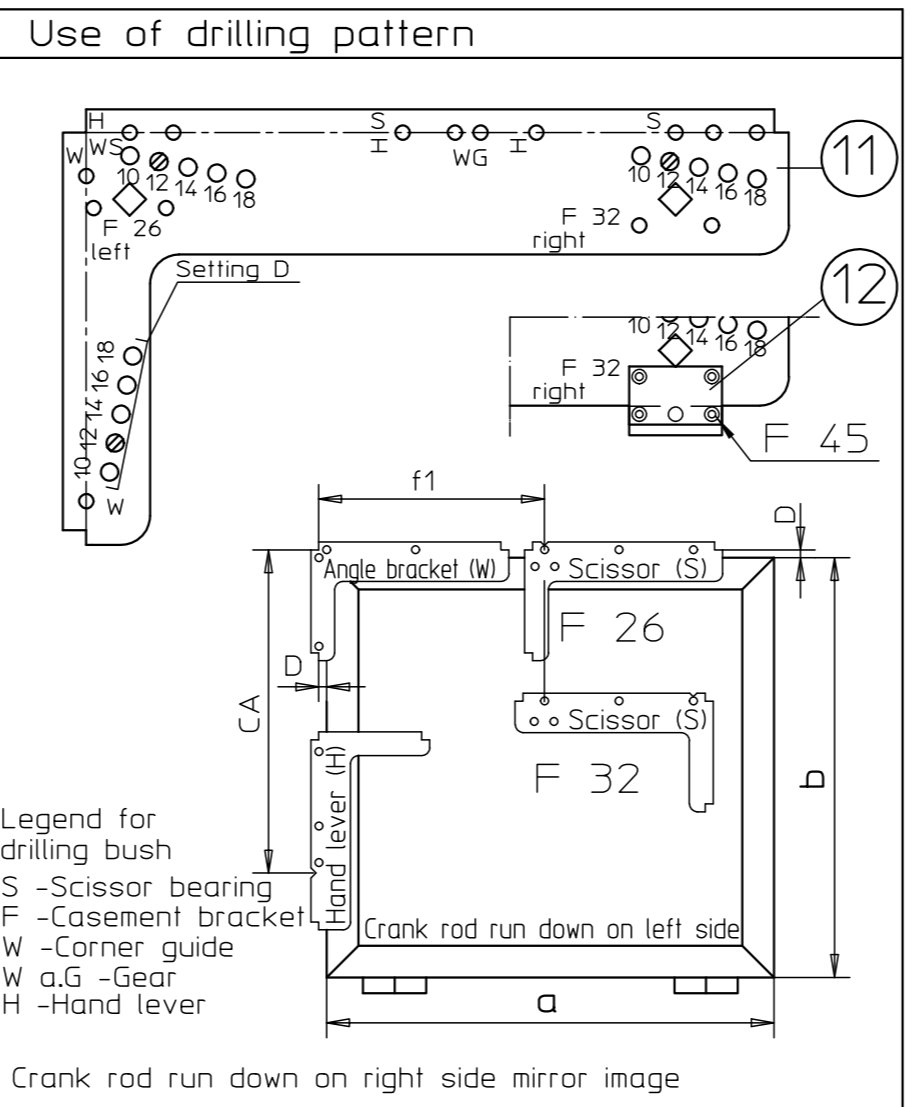
* Cover profiles and rod must be ordered separately

Item No.	Designation	Id.-No. for colour:					Pcs.
		anod. alu.	white RAL9016	dark brown	black	RAL...	
A	Scissor OL 90 N Contents: 1 Slimline scissors OL 90 N 1 Scissor bearing 1 Casement bracket 1 Rod guide 1 Back plate 1 Joint 2 protective covers	30373	30377	30374	74509	30376	6
B	Scissor OL 90 N without casement bracket Contents: 1 Items: 1, 2, 6, 8, 1 Casement bracket f. timber-framed window with euro nut Contents: 1 Casem. bracket f. timber-framed window 1 Back plate	71203	71207	71204	99477	71206	4
B1	Casement bracket f. timber-framed window with euro nut Contents: 1 Casem. bracket f. timber-framed window 1 Back plate	30886	30890	30887	99475	30889	2
C	Hand lever w. corner guide Contents: 1 Corner guide 1 Hand lever OL 90 N 1 Rod guide 1 Cover cap	30611	30615	30612	77945	30614	8
D	Hand lever, lockable Contents: 1 Hand lever, lockable 1 Rod guide	83841	83844	83842	85230	85230	4
E	Corner guide Contents: 1 Corner guide 3 Cover cap (3 colours)				70546		4
Rods and cover profiles							
Cover profile L=2m *		30401	30405	30402	74537	30404	
Cover profile L=3m *		30396	30400	30397	74539	30399	
Cover profile L=6m *		27558	27561	27559	74540	28342	
Rod Ø8 galvanised L=2m					16555		
Rod Ø8 galvanised L=3m					16591		
Rod Ø8 galvanised L=6m					16592		
Accessories (must be ordered separately)							
Drilling pattern			for wood 54799 yellow			for plastic/metal 54800 blue	
Add. drilling pattern OL 90 N f. timber-framed wind. F=45					28141		
Rod coupling OL 90 N					43546		
Rod guide					10878		each 1

Fastening means

Type of window	Fastening screws	drilling ø
Wood	Flat head screw 4x35 DIN 97 or DIN 7997	2,5mm
Aluminium	Tapping screw with countersunk head 4,2xL DIN 7982, screw must penetrate through a profile wall of at least 18mm thickness	3,5mm
Plastic	Tapping screw with countersunk head 4,2xL DIN 7982, screw must penetrate through 2 profile walls	3,5mm

Fastening screws are not included.



Dimension f for casement width a	Lengths of the pull handles (LQ, LZ) and cover profiles (LA) with/without caps
a=380 to 420mm f1=a/2+D-20	1 scissor LA1=f1-9 LA1+f1-25 f1
a=420 to 1200mm f1=a/2+D	1 scissor LA2=CA-152 LA2=CA-160 CA LQ=f1+110 a = 380-1200mm
(for a ≥ 900 2 scissors can be installed)	
a=900 to 2400mm f1=a/4+D f2=a/2	2 scissors LA1=f1-9 LA1+f1-25 LA3=f2-225 f1 f2 LQ=f1+f2+110 a = 900-2400mm
(for a ≥ 1300 3 scissors can be installed)	
For 1 casement a=1300 to 3600mm f1=a/6+D f2=a/3 f3=a/3	3 scissors LA1=f1-9 LA1+f1-25 LA3=f2-225 LA4=f3-225 f1 f2 f3 LQ=f1+f2+f3+110 a = 1300-3600mm
For several casements	
Overall height a=max. 3600mm f1=min.180 f2=min.340 f3=min.340	

Further installation drawings for GEZE OL 90 N with hand lever:

Supplementary sheet: Installation of swivelling hand lever	40444-9-952
Supplementary sheet: Additional lockings OL 90 N	40444-EP-005
OL 90 N for angular windows with flexible corner guide	40444-EP-006
OL 90 N with flexible rod assembly for semicircular and segmental arch windows	40444-EP-010
Supplementary sheet: pillar and frame transmission	40444-EP-014
OL 90 N for outward-opening bottom-hung windows	40444-EP-018
OL 90 N for inward-opening bottom-hung windows	40444-EP-032

GEZE GmbH (Logo)
P.O. Box 19 63
7230 Leutberg
Germany

OL 90 N Basic fitting with hand lever

Scale: 1:1

Material-Nr.: 40444-EP-001

Diese Zeichnung entspricht dem Entwicklungsstand des Zeichnungsdatums bzw. der letzten Änderungsunterlegung. Aus der Benutzung der Zeichnung können keine Ansprüche, gleich welcher Art, einschließlich Schadensersatzansprüche abgeleitet und gegen GEZE geltend gemacht werden. Die Zeichnung bleibt unser Eigentum und ist Dritten nur für die Vertragsabwicklung zur Benutzung überlassen. Sämtliche aus der Zeichnung ergebenden Ansprüche stehen ausschließlich GEZE zu. Zusage, Vorfrage, Zustimmung von GEZE darf diese Zeichnung weder ververvielfältigt noch Dritten zugänglich gemacht werden.